

# ***STAY in CONTROL!***

## **Daystar's Replacement Control Arm Upgrade for Jeep TJs #KU70086BK**

The Jeep Wrangler TJ is as popular as ever. Look around and you'll be surprised how many of these rugged off road machines you see.

The available accessory list for the TJ reads like a phone book and quite honestly, can be somewhat intimidating.

Enter Daystar Products. The folks at Daystar manufacture several accessories for the TJ as well as many other applications. Our subject vehicle has been through the rough and suffered several rock impacts on the underside which have damaged/weakened the stock lower control arms (photos A, B & C). The damage can negatively affect alignment, driveshaft angles and drivability. So we opted for a set of their Heavy-Duty Replacement Control Arms.

These units are not only stronger than stock, they feature Daystar's famous Re-buildable Poly-Flex Joints at one end and Poly Joints at the other, which enhances both ride and flexibility. The adjustable arms work with lifts from 0"-6" and allow for optimum driveshaft and caster angles. The lower arms are beefy enough to glide over the same rocks that dented and distorted our stock stamped steel units.

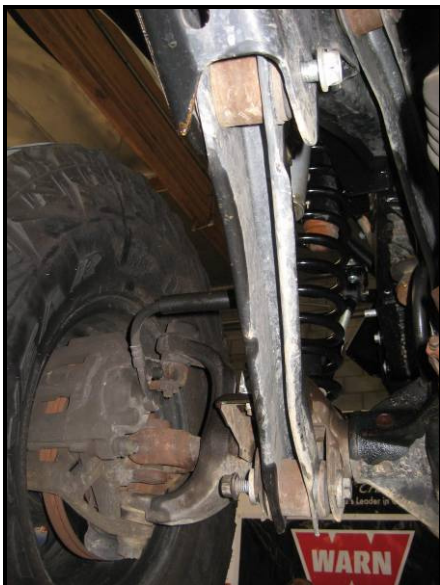
Follow along as we perform the simple installation in less than 3 hours!



**Photo B**



**Photo C**



**Photo A**

### ***FRONT AXLE:***

1) Assemble arms & set length for your vehicle. If you have no lift, set the length to match your stock arms. For vehicles lifted up to 6", lengthen arms 1/4" for each 1" of lift (photo 1).



**Photo 1**

2) Raise vehicle and support at frame with stands. Use a floor jack to raise and lower axle as needed. Using the jack at the pinion will help tilt axle when needed.

3) Loosen all control arm bolts. This will make it easier to move the axle when installing the new arms (photo 2).



Photo 2

4) Remove factory upper control arms (photo 3).



Photo 3

5) Install Daystar upper control arms (photo 4).



Photo 4

6) Remove factory lower control arms.

7) Install Daystar lower control arms. If your vehicle has alignment cam washers, replace them with the new Daystar cam washers which will lock the arm in place (photos 5 & 6). Caster adjustment is now done by adjusting the control arms. The Poly Flex Joints only can be tightened at this time. Tighten the Poly Joints when the vehicle is on the ground.



Photo 5

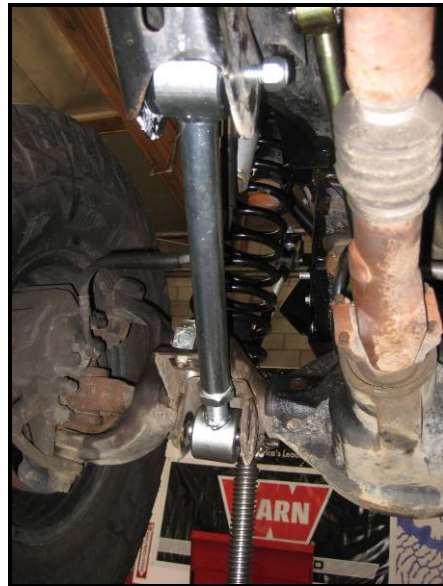


Photo 6

## REAR AXLE:

8) Repeat procedure on rear axle (photos 7-10). Prior to removing the rear upper control arms, you will need to unbolt the parking brake cable brackets (photo 11). These can be secured to the new arms with a tie strap if needed. The square carriage bolt holes on the upper arm axle brackets will need to be drilled to 7/16" for the new Daystar bolts (photo 12).



Photo 7



Photo 8

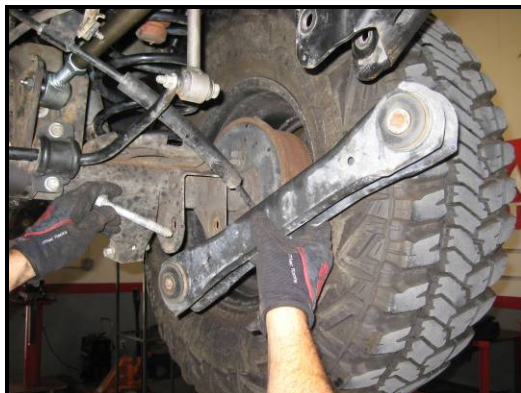


Photo 9



Photo 10



Photo 11



Photo 12

9) With the vehicle on the ground, tighten all bolts at poly joints. Tighten all jam nuts (photo 13).



Photo 13

10) Grease all fittings with Daystar Poly Lube or other suitable lubricant (photo 14).



Photo 14

**Parts Provided by:**

Daystar Products  
[www.daystarweb.com](http://www.daystarweb.com)

**Installation Facility Provided By:**

Off Road Unlimited  
[www.offroadunlimited.com](http://www.offroadunlimited.com)

**Installation Performed By:**

Mike Duval  
X-Treme Toyz  
[www.x-tremetoyz.com](http://www.x-tremetoyz.com)