

# ATTITUDE ADJUSTMENT

## X-Treme Toyz installs a pair of Zone Offroad Products' Rear Coil Spring Relocation Brackets on a '07 Jeep Wrangler JK

Text: Mike Duval  
Images: John Saffelo

After installing a BDS 6.5" Long Arm Suspension System and new CV Driveshafts from General Driveshaft on our 2007 JK Unlimited, we found that once the rear links were adjusted for the proper CV operating angle, the tilting of the axle housing caused the coil springs to bow in a less than desirable shape (*see photo 1 "before"*).

Fortunately for us, Zone Offroad Products (*a BDS Subsidiary*) manufactures a slick fix for this issue. A pair of laser-cut 3/16" heavy-duty steel weld-on brackets, (*photo 2*) provides the correct coil spring angle and moves the springs forward for optimum positioning.

The installation is straight forward with easy to follow instructions. We commandeered a bay and lift at Off Road Unlimited's Burbank, CA facility for our install. It took less than 1-1/2 hours, and that included trimming some aftermarket gussets that were on our axle, to clear the new mounts. The kit will work with most suspension systems.



Photo 2

### Installation:

1) Support the axle. Disconnect the rear track bar from the driver's side axle mount (photo 3).



Photo 3

2) Disconnect the rear sway bar links (photo 4).

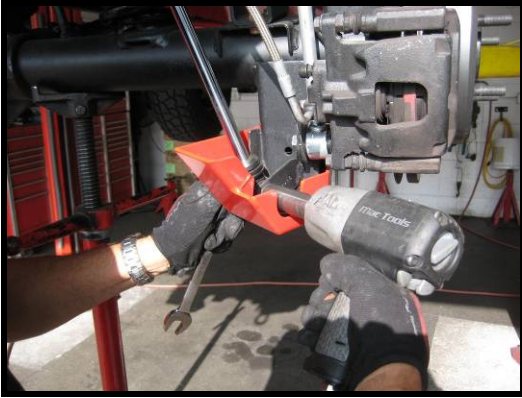


Photo 4



Photo 1

3) Disconnect the rear shocks @ axle (photo 5).



**Photo 5**

4) Release the ABS wires @ frame & axle (photo 6 & 6a).

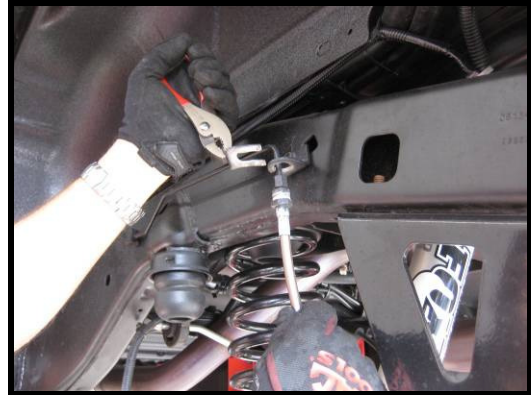


**Photo 6**



**Photo 6a**

5) Release brake line by removing retaining clip (photo 7).



**Photo 7**

6) Lower axle and remove coil springs (photo 8).



**Photo 8**

7) Remove the coil spring retaining boss from both axle mounts with a sawzall or cutoff wheel. Grind any excess for a smooth surface (photo 9 & 9a).



**Photo 9**

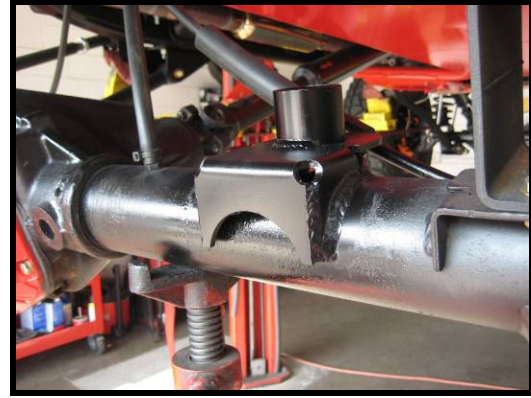


**Photo 9a**

8) Hold the new mount in position on axle and mark weld area to be cleaned (photo 10 & 10a).



**Photo 10**



**Photo 12**



**Photo 10a**

11) Re-install the coil springs and re-attach the components from steps # 1-5. Check all hardware for proper torque.

12) Once installed, the spring angle looks great and we're ready to go wheeling (photo 13).

9) Tack-weld the new mounts in place. Check the positioning and then complete welding (photo 11).



**Photo 11**



**Photo 13**

10) Allow the weld to cool and then paint the new mounts and welds (photo 12).